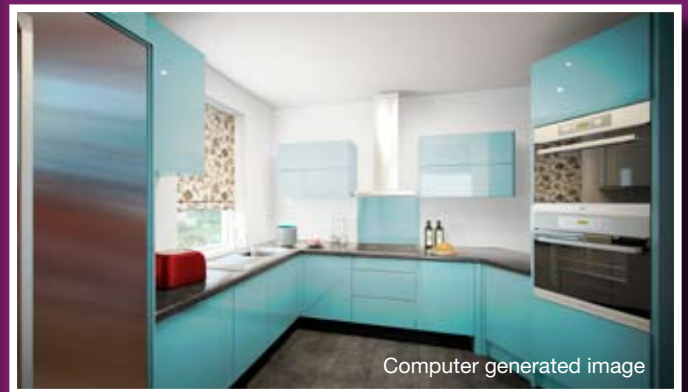
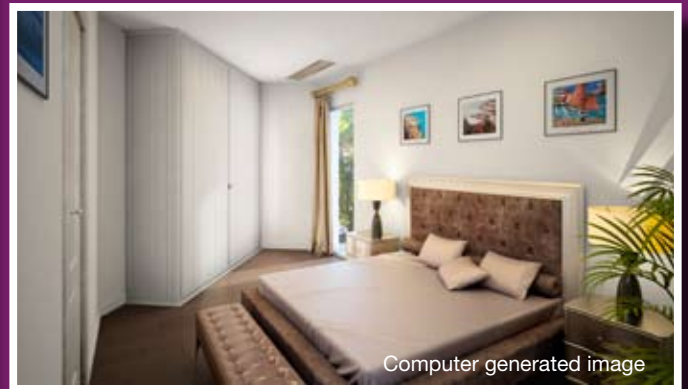
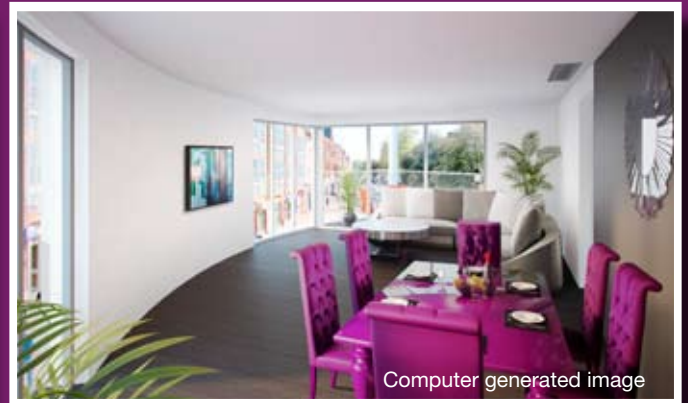


LONDON NW2

Five Brand New 2 & 3 Bedroom
Luxury Apartments at the prestigious
Jubilee Heights complex



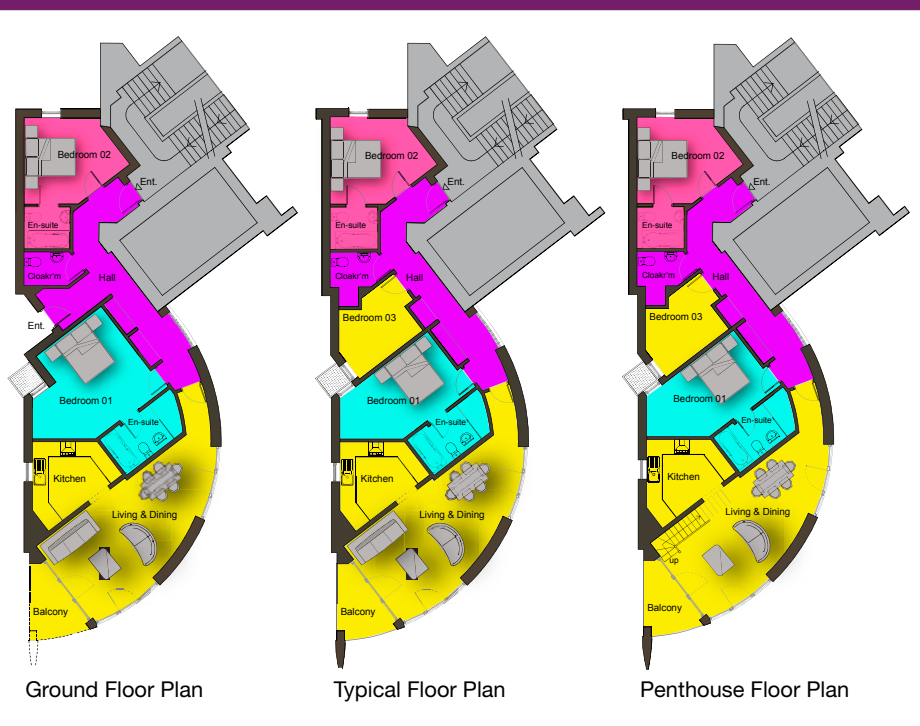
The Apartments

This luxury, modern, purpose built block consists of five brand new two and three bedroom en-suite apartments, which are built to an exceptionally high specification. The 1,130 sq ft (105 sq m) apartments come with **air conditioning, hardwood floors, private balconies and floor to ceiling windows** for a contemporary light and spacious feel.

Jubilee Heights further benefits from a **24-hour concierge, landscaped gardens, a superb swimming pool with gym and sauna**. Secure parking is available.



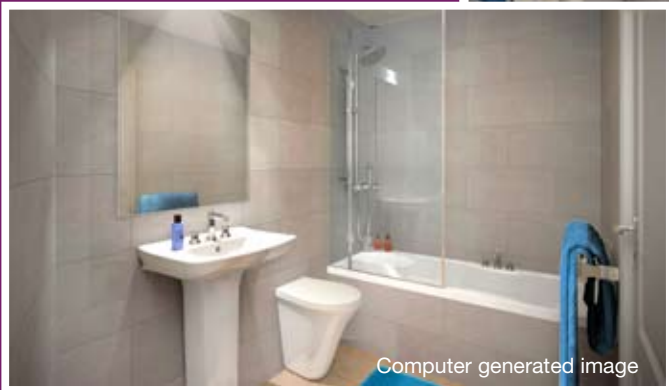
Computer generated image



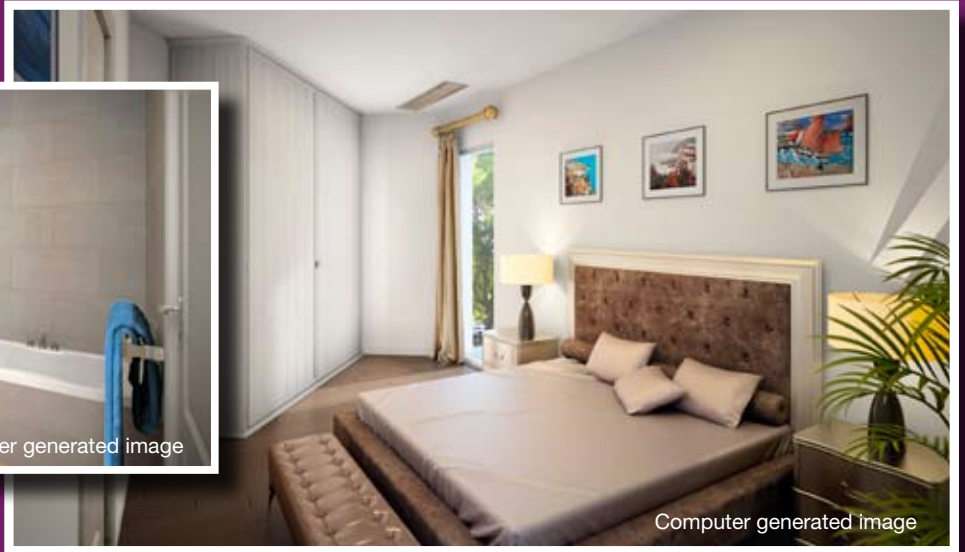
Ground Floor 1,050 sq ft	2 Bedrooms Private garden
First Floor 1,130 sq ft	3 Bedrooms Balcony
Second Floor 1,130 sq ft	3 Bedrooms Balcony
Third Floor 1,130 sq ft	3 Bedrooms Balcony
Penthouse 1,130 sq ft	3 Bedrooms Balcony and roof garden



Computer generated image



Computer generated image



Computer generated image

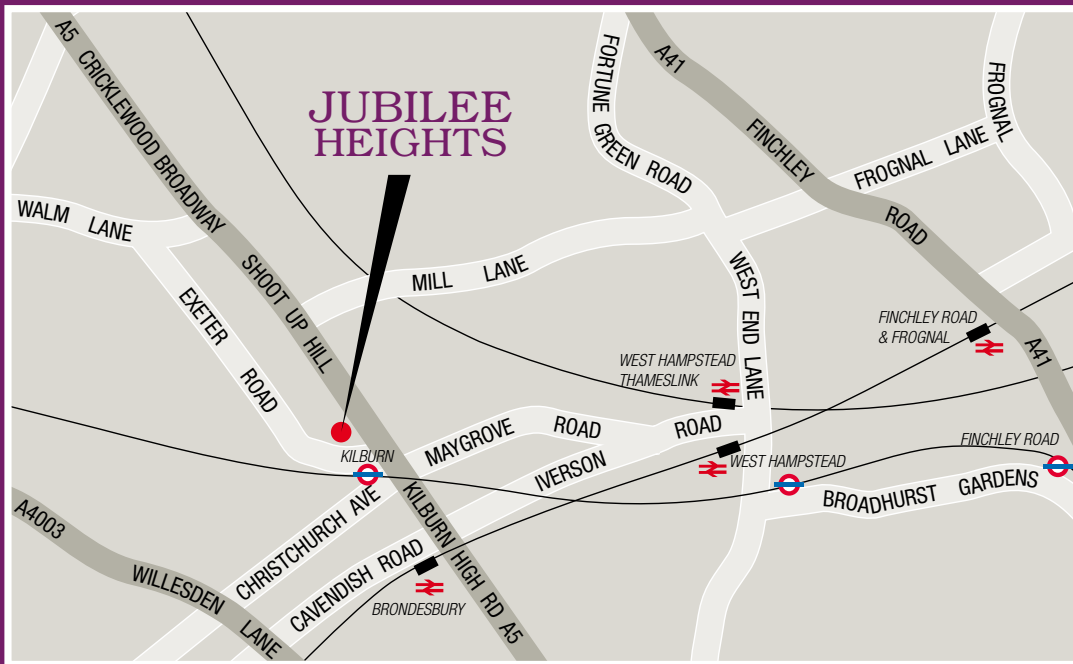


The Apartments

Situated moments from the amenities of Kilburn High Road and within easy reach of the shops, bars and restaurants of West Hampstead, Jubilee Heights is minutes away from the extensive facilities of West End Lane and Finchley Road.

Jubilee Heights is within easy reach of the excellent transport links to The City and has direct access to:

- Bond Street, 10 minutes (Jubilee Line)
- London Bridge, 25 minutes (Jubilee Line)
- Canary Wharf, 35 minutes (Jubilee Line)



REDAB
PROPERTIES PLC

www.redabproperties.com

For more information or
to arrange a viewing please contact

REDAB PROPERTIES PLC

Tel: +44 (0)207 278 2780

Fax: +44 (0)207 278 9784